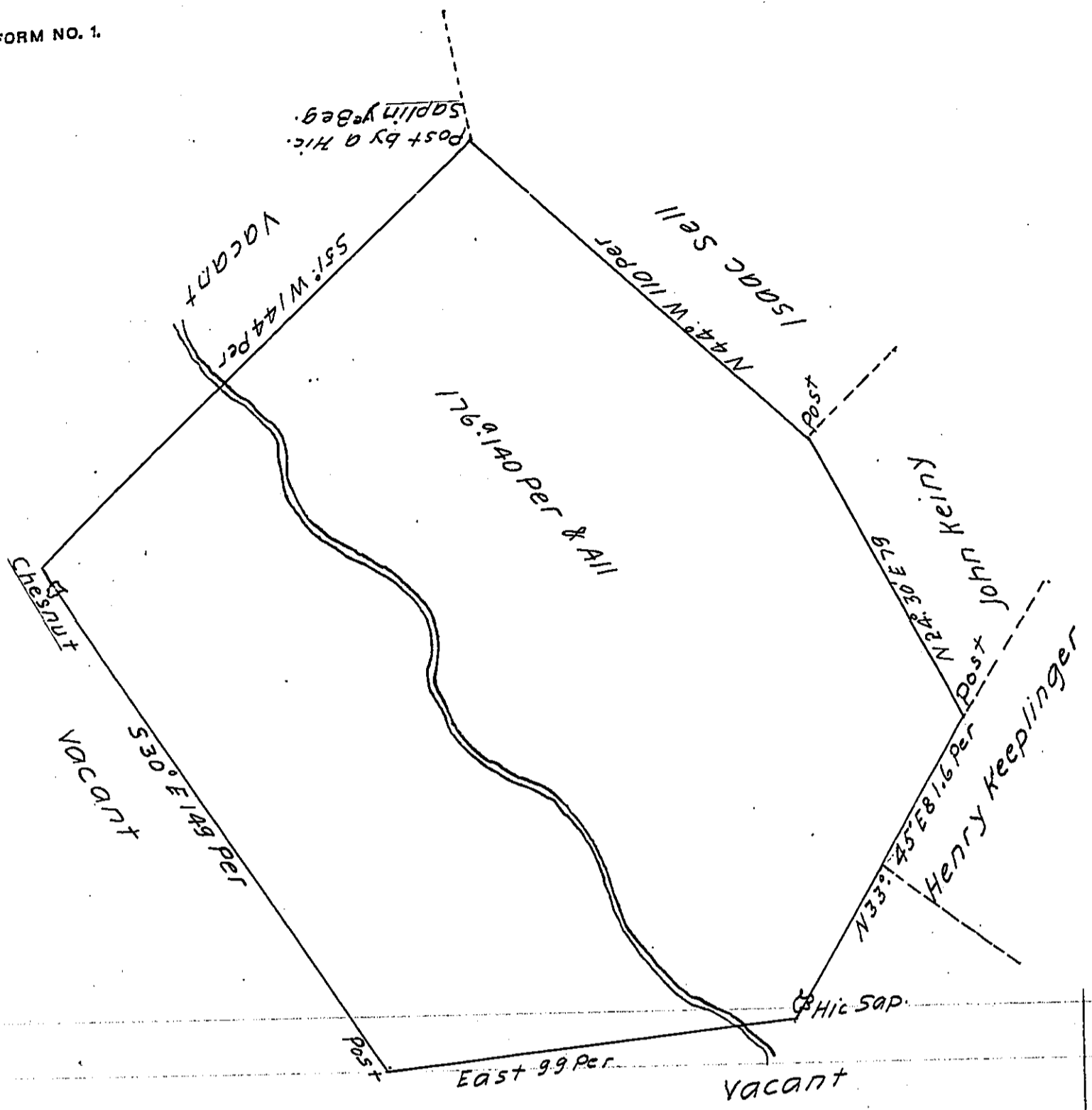


FORM NO. 1.



Draught of a Tract of Land situate in Germany Township York County containing one Hundred and seventy Six Acres and one Hundred and Forty Perches, Surveyed to Peter Stimmel (In Right of Martin Bard) The 20th Day of August 1765 In Pursuance of a Warrant dated the 26th Day of August 1755

By Arch^d. McClean D. S.

To John Lukens Esq^r
Surveyor General

IN TESTIMONY that the above is a copy of the original remaining on file in the Department of Internal Affairs of Pennsylvania, made conformably to an Act of Assembly approved the 16th day of February, 1833, I have hereunto set my Hand and caused the Seal of said Department to be affixed at Harrisburg, this thirty-first day of July, 1911.

Henry Aouch
Secretary of Internal Affairs.